

FLEXCUBE General Ledger Database Setup  
Oracle FLEXCUBE Universal Banking  
Release 12.2.0.0.0  
[May] [2016]



---

# Table of Contents

- 1. SETTING UP FLEXCUBE GENERAL LEDGER DATABASE ..... 1-1**
  - 1.1 INTRODUCTION ..... 1-1
  - 1.2 CREATING FGL SCHEMA BY IMPORTING FULL DUMP ..... 1-1
  - 1.3 CREATING SCHEMA BY IMPORTING FULL DUMP ..... 1-1
  - 1.4 CREATING FGL SCHEMA FROM SHIPMENT MEDIA ..... 1-2
    - 1.4.2 *Custom Installation*..... 1-5
  - 1.5 LOADING DATA ..... 1-13
    - 1.5.1 *Import Database Installation*..... 1-23

---

# 1. Setting up FLEXCUBE General Ledger Database

## 1.1 Introduction

This chapter explains the steps to set up database for FLEXCUBE General Ledger (FGL).

## 1.2 Creating FGL Schema by Importing Full Dump

Oracle FLEXCUBE database can be installed in one of the following methods.

- Import full dump – Import the Oracle FLEXCUBE objects into an empty schema using full dump. This is a manual activity.
- From Shipment Media – Load the Shipment Mediaobjects into an empty schema using Installer.
- Clone database or template based setup – Clone the database using Installer.

These methods are discussed in detail under the following heads.

## 1.3 Creating Schema by Importing Full Dump

Under this method, you need to manually import the Oracle FLEXCUBE DMP file into the Oracle FLEXCUBE schema. This can be done using the following command.

```
$ imp user_name/password file = dmp_file_name.dmp full = Y commit = Y log = imp.log  
compile=n
```

### **Post Import Activities**

Once the DMP file is imported, you need to carry out the following activities:

- Enabled all triggers by running the procedure 'pr\_instlr\_post\_import.prc' located under the folder 'InstallOptions\Database\Common'
- Update STTM\_BANK with auto\_gen\_cif='N'
- Update the following tables:

- actb\_daily\_log
- bktb\_schema\_defaults
- dstb\_maint, ictb\_acc\_action
- ictb\_action\_log, ictb\_resolution\_error
- lmtb\_offline\_nodes, lmtb\_offline\_utils
- mstb\_current\_msg\_ind\_out
- mstb\_dly\_msg\_in
- mstb\_dly\_msg\_out
- mstm\_mcs
- mstm\_undo
- sttm\_branch\_node
- sttm\_branch
- sttm\_customer

Set node as the connection string for the above tables.

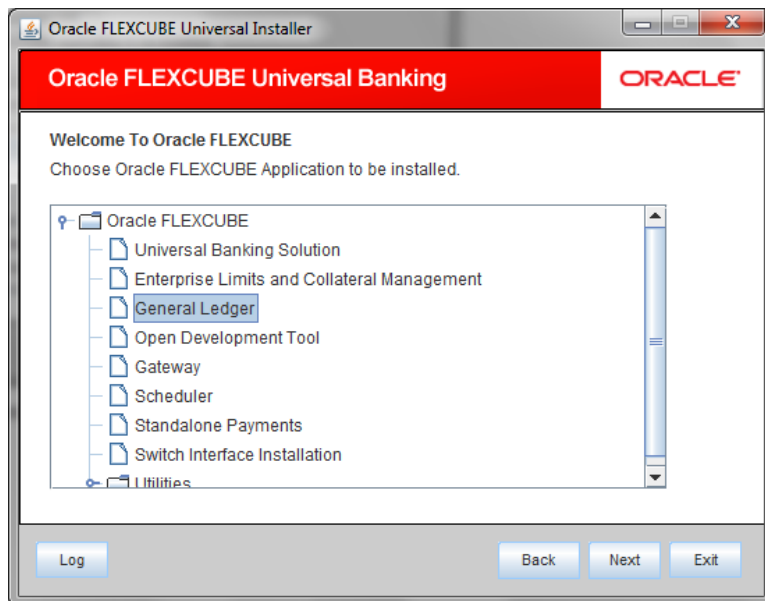
## 1.4 **Creating FGL Schema from Shipment Media**

You can create the FGL schema by loading the objects from the shipment media itself. The method is described under the following headings.

### 1.4.1.1 **Loading Objects from Shipment Media**

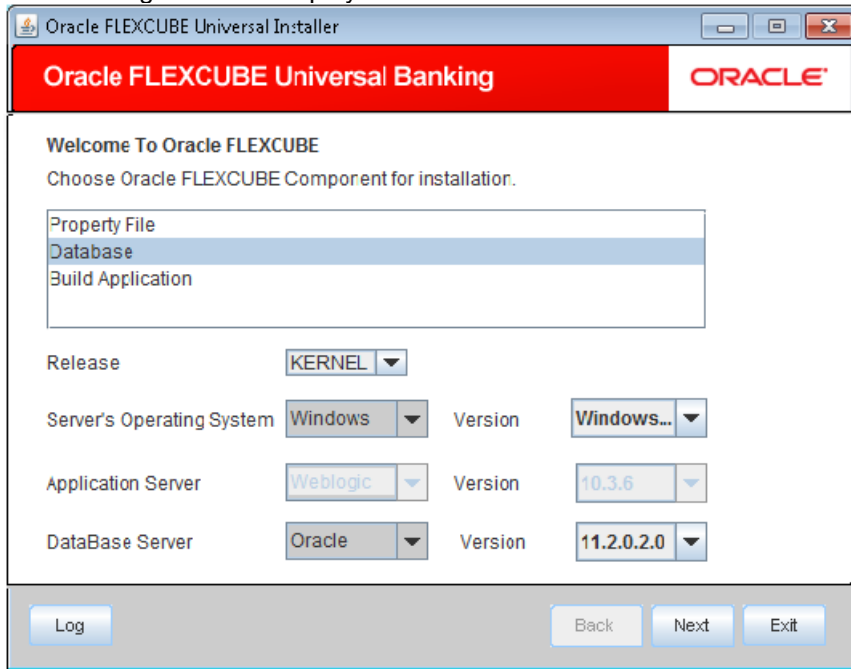
The steps to load objects from the Shipment Media are given below:

1. Launch Oracle FLEXCUBE Universal Banking Solution Installer.
2. Click 'Next'. The following screen is displayed.



3. Select 'General Ledger'. Click 'Next'.

The following screen is displayed:



4. Select 'Database Setup'.
5. Specify the following details:

#### **Operating System**

Specify the operating system in which you are installing Oracle FLEXCUBE.

#### **Application Server**

Specify the application server on which you are installing Oracle FLEXCUBE.

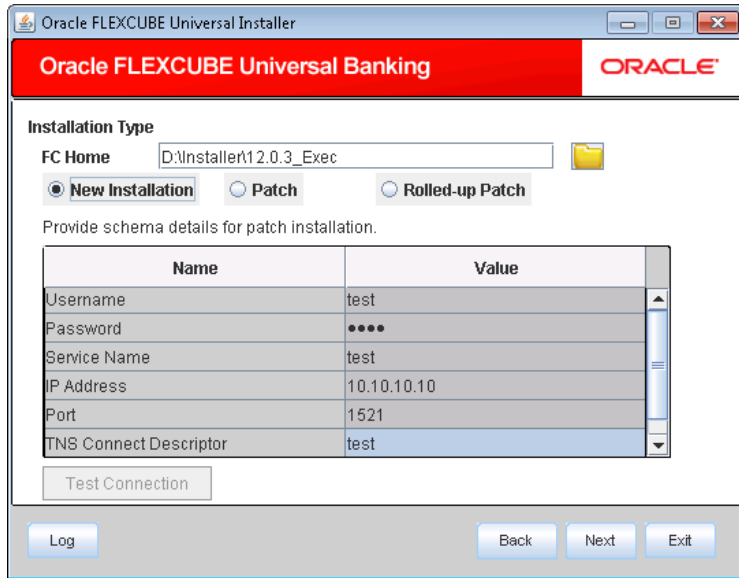
#### **Database Server**

Specify the database server on which you are installing Oracle FLEXCUBE.

#### **Release**

Specify the release which you want to install. Select the appropriate one from the adjoining drop-down list. The options are:

- KERNAL
- VN Cluster



Choose from the available modes of Installation

**New Installation**

If database setup is being done for the first time, choose this option

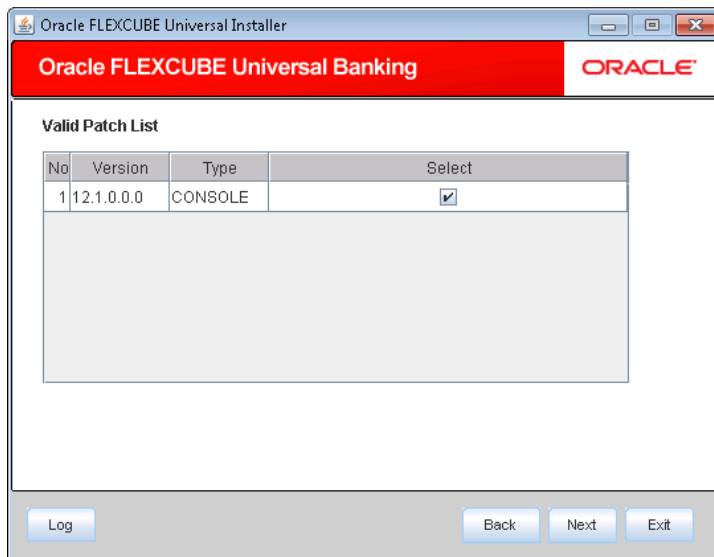
**Patch**

If database setup is being done over existing base , choose this option

**Rolled-Up Patch**

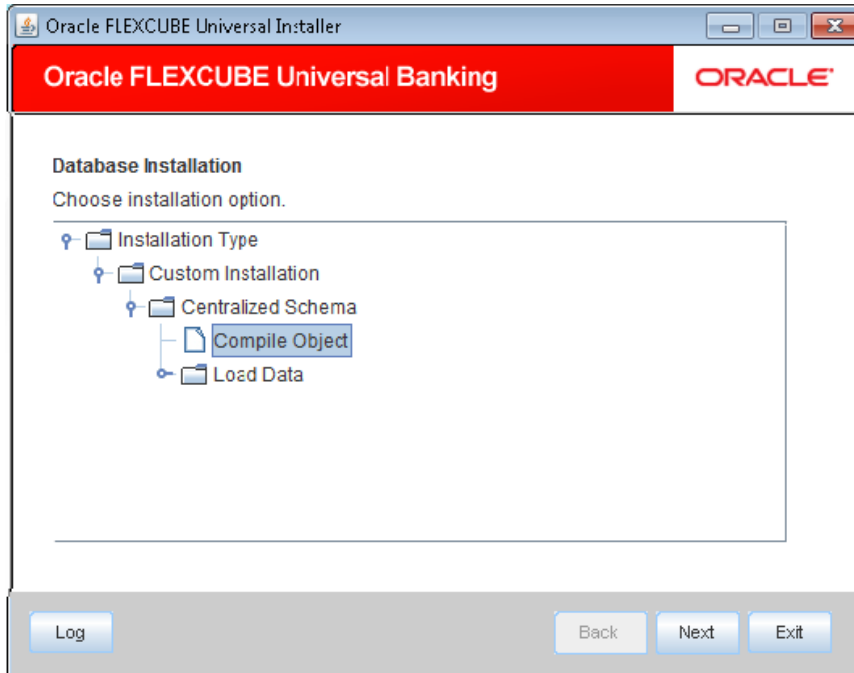
Choose this option if installing rolled up patches

Basing on the options chosen, schema details will be prompted.



From the list of sources available, choose the sources that are applicable

6. Once you have specified the above details, click 'Next'. The following screen is displayed:

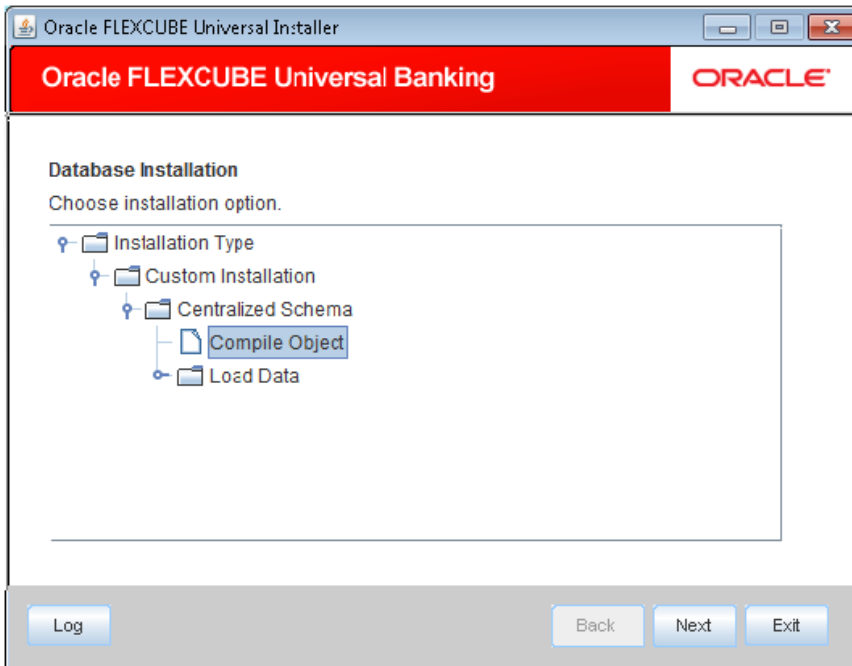


### 1.4.2 **Custom Installation**

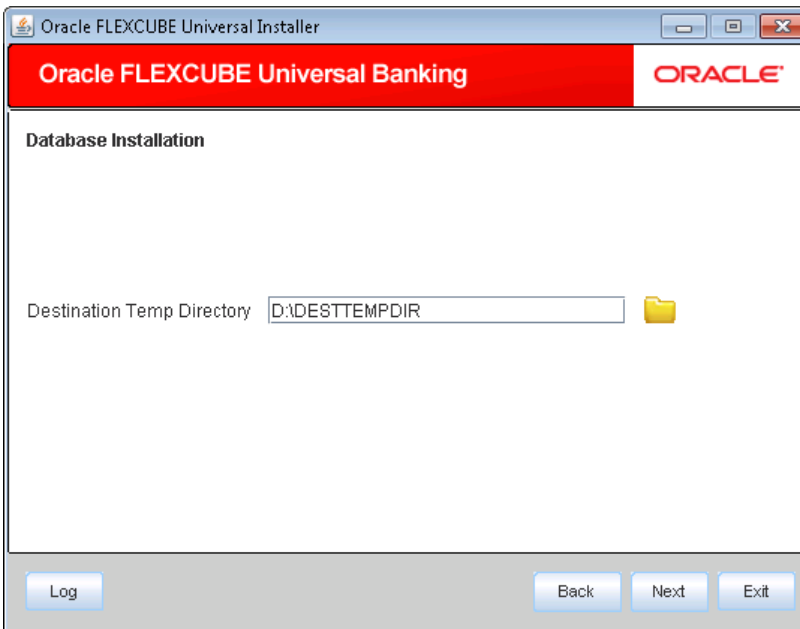
The Oracle FLEXCUBE Universal Solutions installer supports custom installation of Oracle FLEXCUBE in two methods:

- Compile objects and load static data into the database
- Load objects and data by importing data and objects from the import file

1. Select the installation type 'Custom Installation'.



2. Select 'Compile Objects' under 'Custom Installation' and click 'Next'. The following screen is displayed.



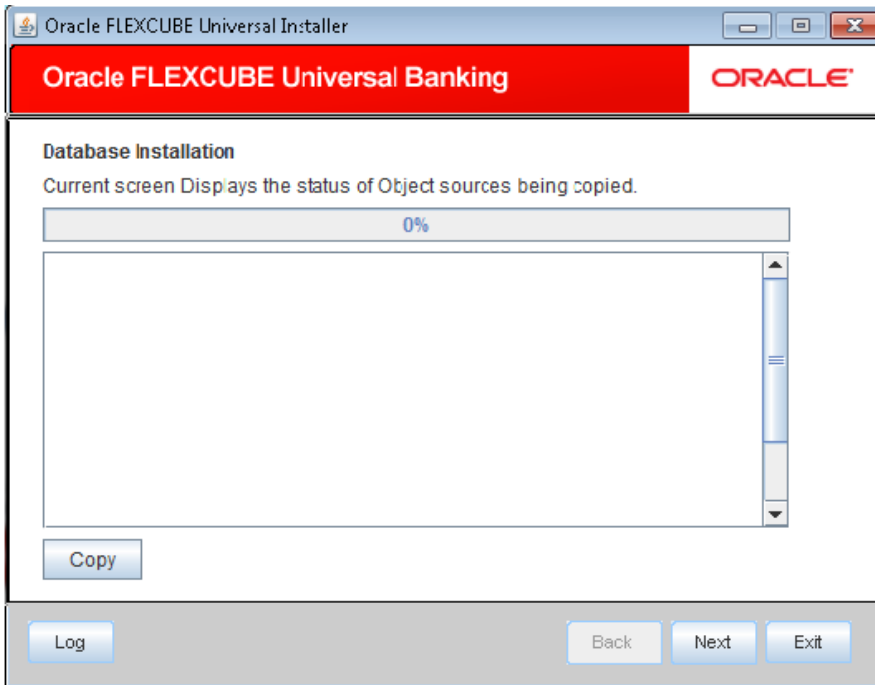
3. Specify the following details:

**Destination Temp Directory**

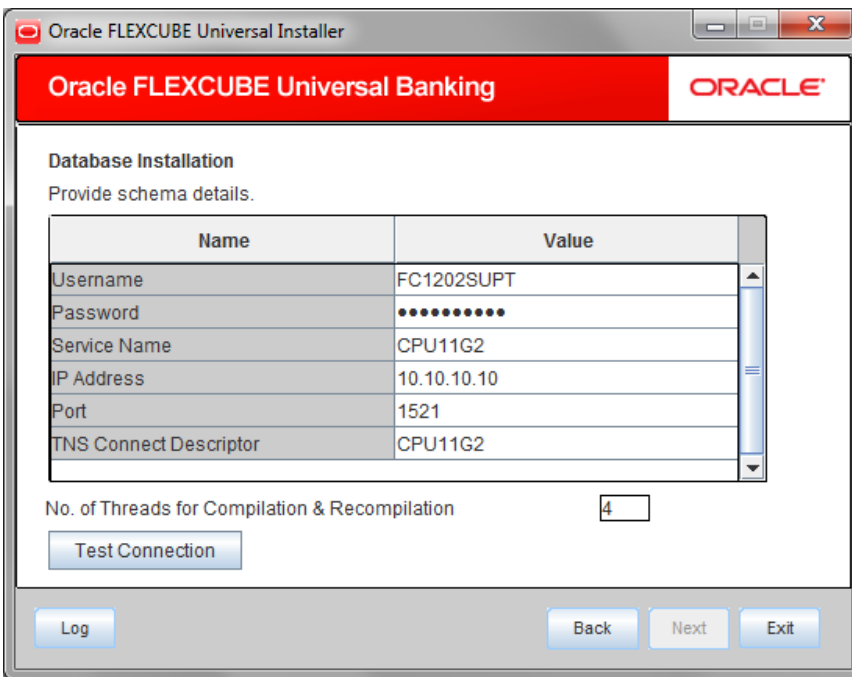
Specify the destination directory. Use the directory icon to browse the Destination directory.

Once you have specified the details, click 'Next'. The following screen is displayed.





4. Click 'Copy' button. The Installer will copy the source files from the source directory to the destination directory. The files are taken from this location for compilation.
5. Once the copy process is completed, the Installer navigates you to the following screen.



6. Specify the following schema details:

**User Name**

Specify the user name to access the schema.

**Password**

Enter the schema password.

**Service Name**

Specify the service name of database.

**TNS Connect Descriptor**

Specify a valid connect string that contains the details for database connectivity.

**IP Address**

Specify the IP address of the system where the database schema is installed.

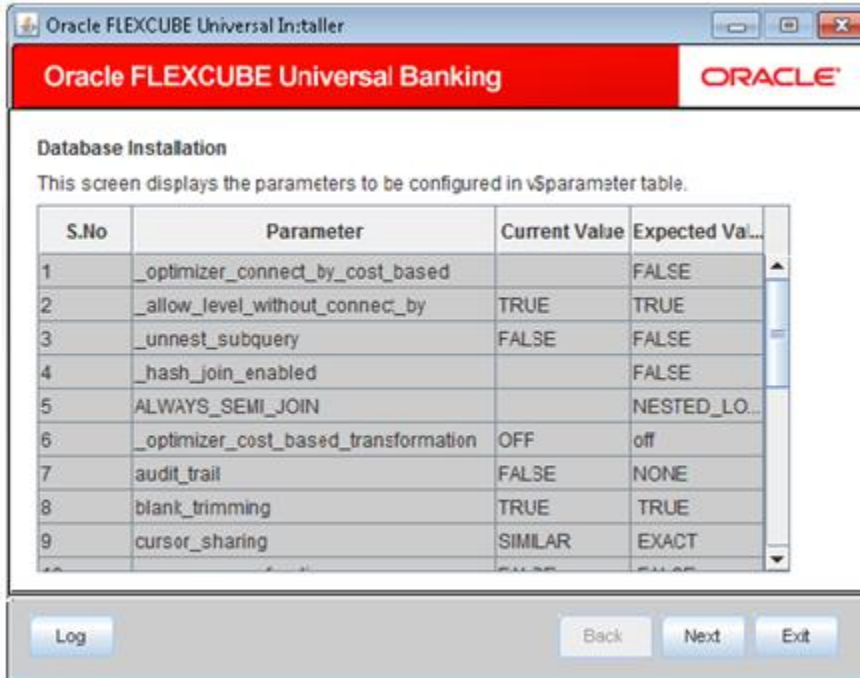
**Port**

Specify the port number.

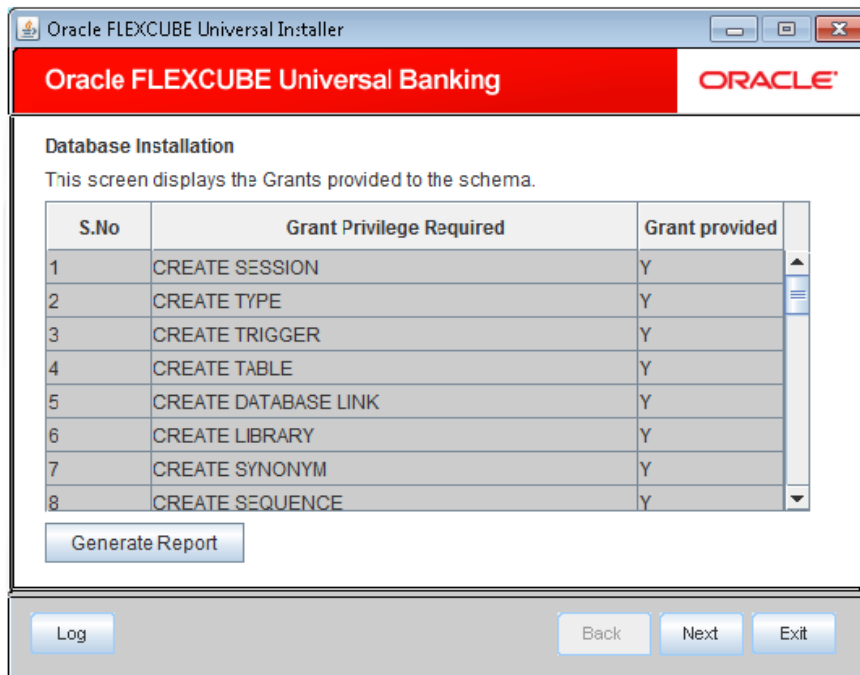
**No. of threads for Compilation & Recompilation**

Specify the number of processes that would be used to compile the objects and recompile the Objects in Recompile Process. Recommended value is 4 to 8. (no of cores of the machine from where db is being set).Maximum Limit is No of cores\*2.

7. Once you have entered the details, you can test the database schema connection using 'Test Connection' button.
8. After testing the connection, click 'Next'. The following screen is displayed.

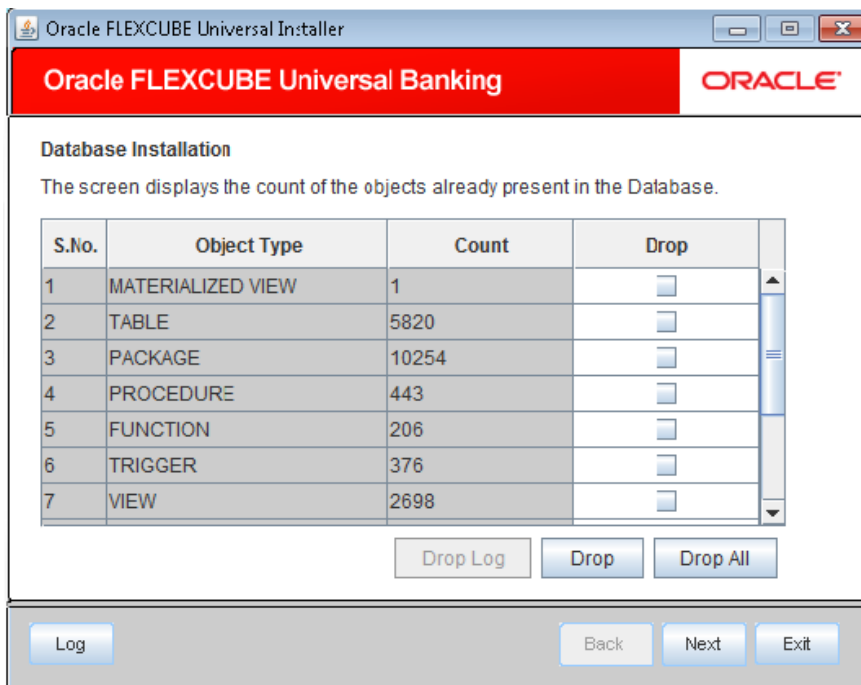


9. This screen displays the parameter details of the database. This is for information purpose.
10. Click 'Next'. The following screen is displayed.




11. This screen displays the grants provided to the schema. If object compilation is required and the privilege is not given, then you can find that out from this screen. This is for information purpose.

12. If you click 'Generate Report' button, in the 'Logs' folder, the installer creates an SQL file 'grantScript.sql' containing the script for granting the privileges. You can use this file to get the access. The following screen is displayed.



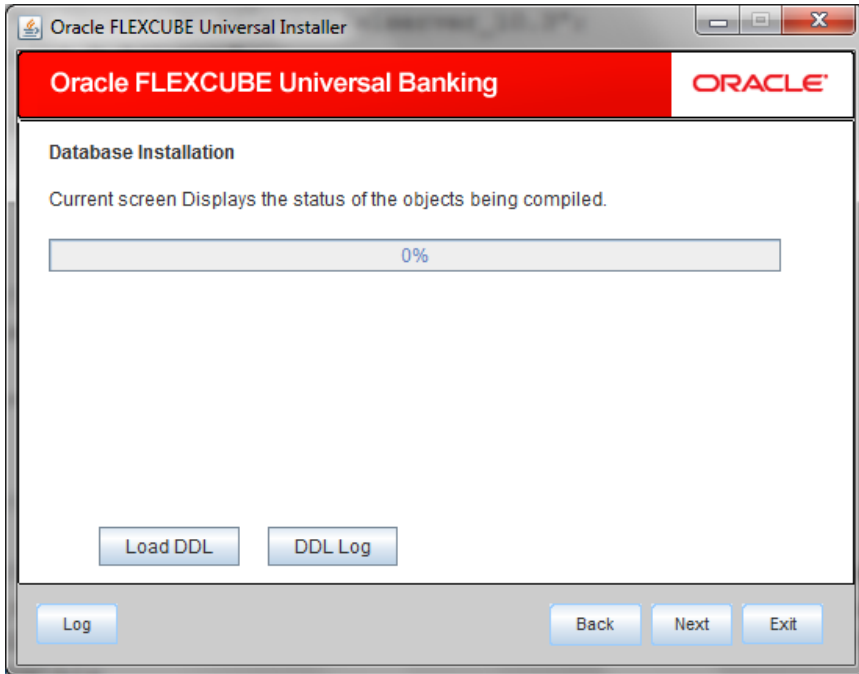
13. You can select the objects to be dropped and click 'Drop' button to drop the selected objects. As you drop the objects, the count in this screen is updated.

14. Click 'Drop Log' button to view the drop log.

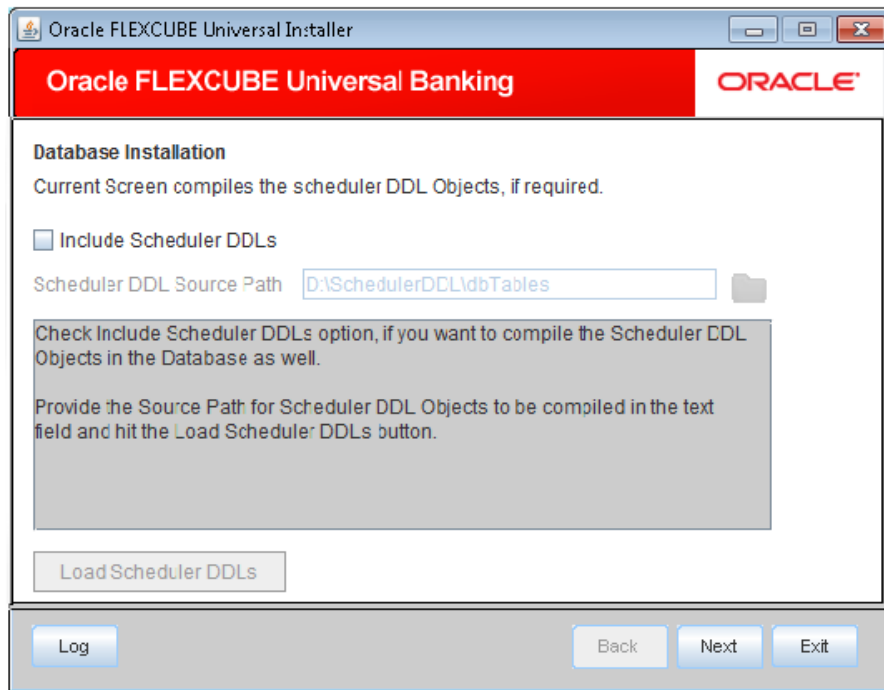
 The details of the drop process are logged in a file 'Drop\_All.log' in the folder <Destination Folder>/DBLogs.

15. If all the objects do not get dropped at the first time, you can drop them again.

16. Click 'Next' button, the following screen is displayed.



17. The table, sequences and type objects are compiled and the count is updated.
18. Click 'DDL Log' button to view the DDL logs. The log file 'LoadDDL.log' will be available in the destination directory under the folder 'DBLogs'.
19. Click 'Next'. The following screen is displayed.




20. Specify the following details:

## Include Scheduler DDLs

Check this box to include scheduler DDLs. If you do not need to include the scheduler DDLs, leave this field unchecked.

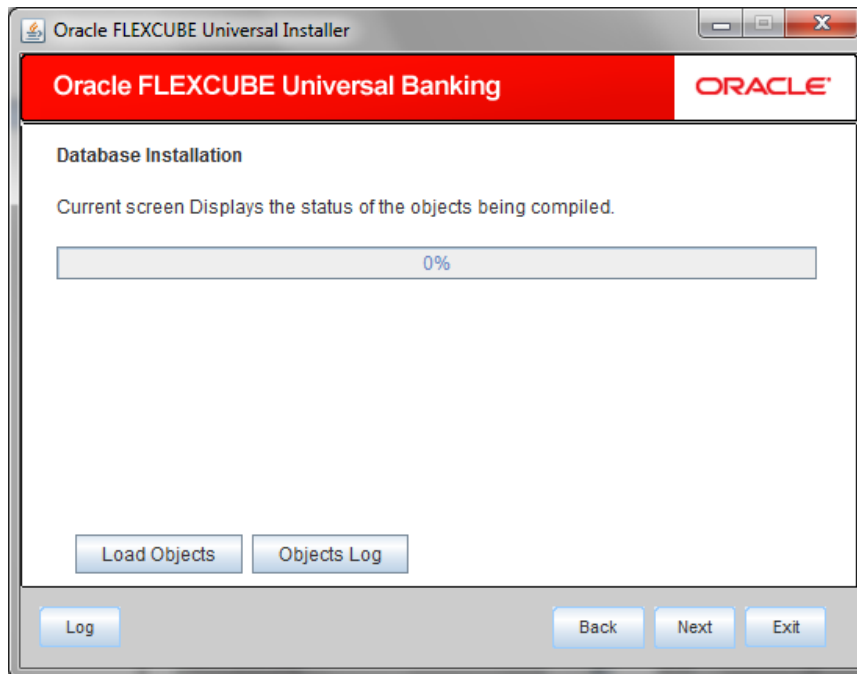
## Scheduler DDL Source Path

Specify the location of the 'tables\_oracle.sql' folder, which is available in extracted 'quartz.jar'.

 Quartz is an open source job scheduling service. You can use Quartz to create schedules for executing jobs whose tasks are defined as standard Java components. You first need to download the file 'quartz.jar' and extract it to the local machine. In the extracted folder, find the location of the folder 'dbTables' and enter that path in the field 'Scheduler DDL Source Path'.

21. Click 'Load Scheduler DDLs' to compile the files.

22. Click 'Next'. The following screen is displayed.



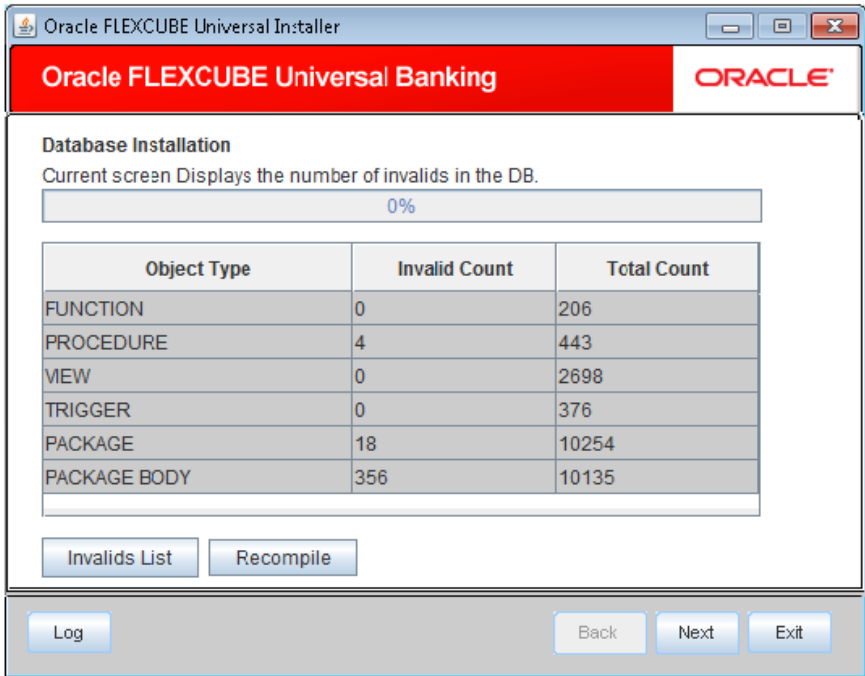
23. Check the objects that you need to load.

24. Click 'Load Objects' button. The installer loads the functions, procedures, views, triggers and packages as per your selection and compiles them.

25. Click 'Objects Log' button to view the log. The log file 'LoadAppObj.log' will be available in the destination directory under the folder 'DBLogs'.

26. The installer loads the DDL and application objects of the selected modules.

27. Click 'Next'. The following screen is displayed.



28. Click 'Invalid List' button to view the count of invalid objects. The installer creates the file 'InvalidList.txt' in the destination directory under the folder 'DBLogs'.

29. You can use the 'Recompile' button to do a cyclic recompilation. This will reduce the invalid objects count.

30. You can view the recompile logs by clicking 'Log' button. The installer creates a file 'recompile.log' in the destination directory under the folder 'DBLogs'.

31.

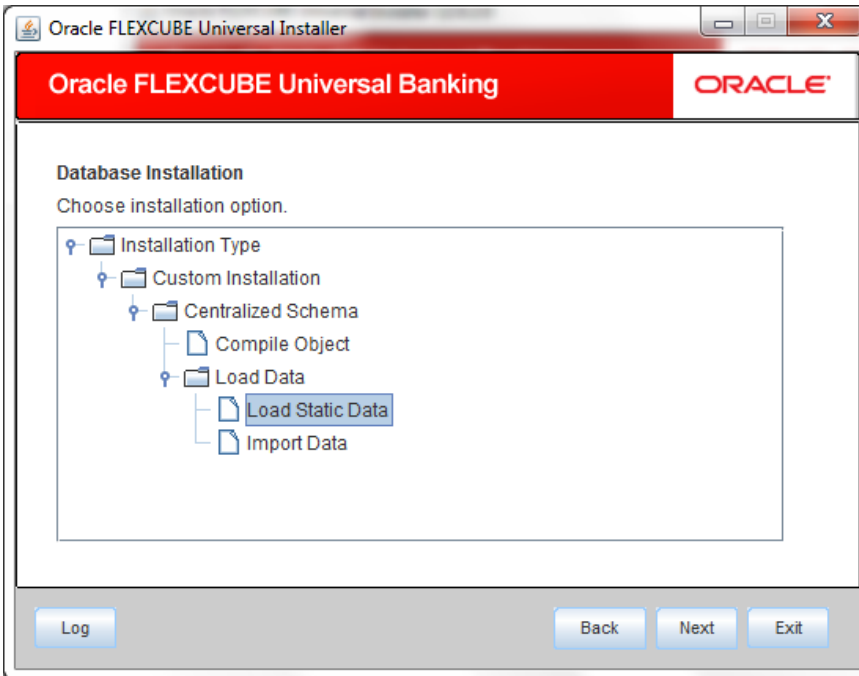
## 1.5 Loading Data

Once the objects are loaded, you need to insert data into the tables.

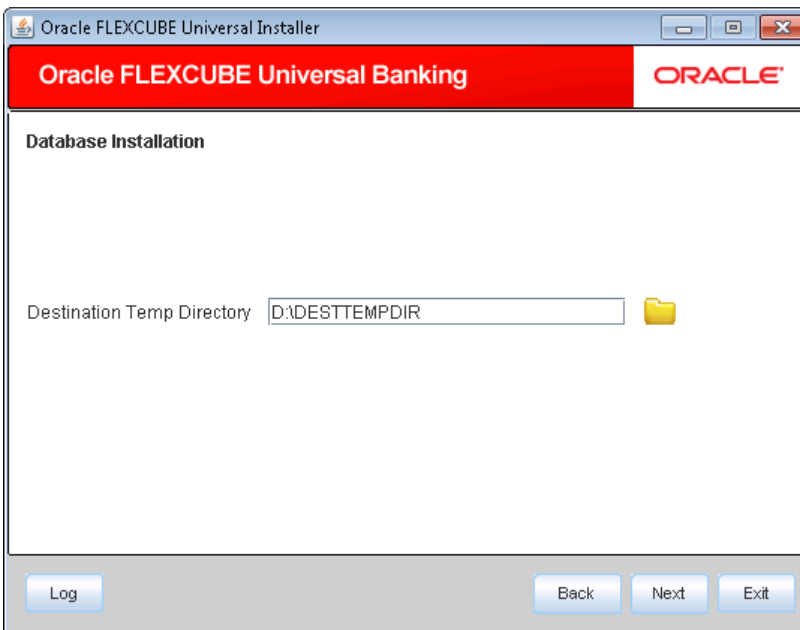
This section explains the steps to load static data into the database and the basic setup to be done.

Follow the steps given below:

1. Launch Oracle FLEXCUBE Universal Banking Solutions Installer.



2. Select 'Load Static Data' and click 'Next'. The following screen is displayed.



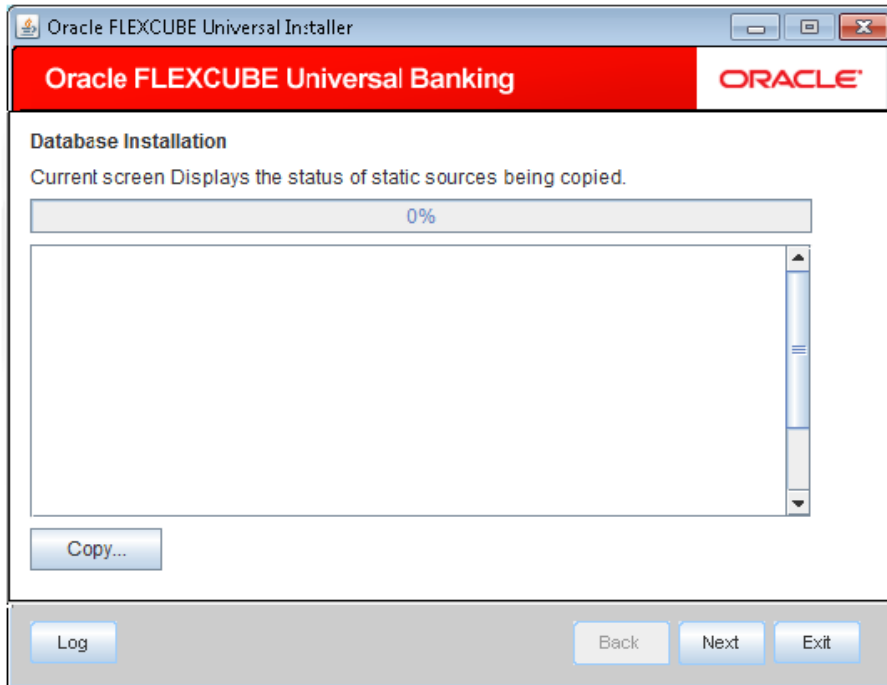
3. Specify the following details:

**Destination Temp Directory**

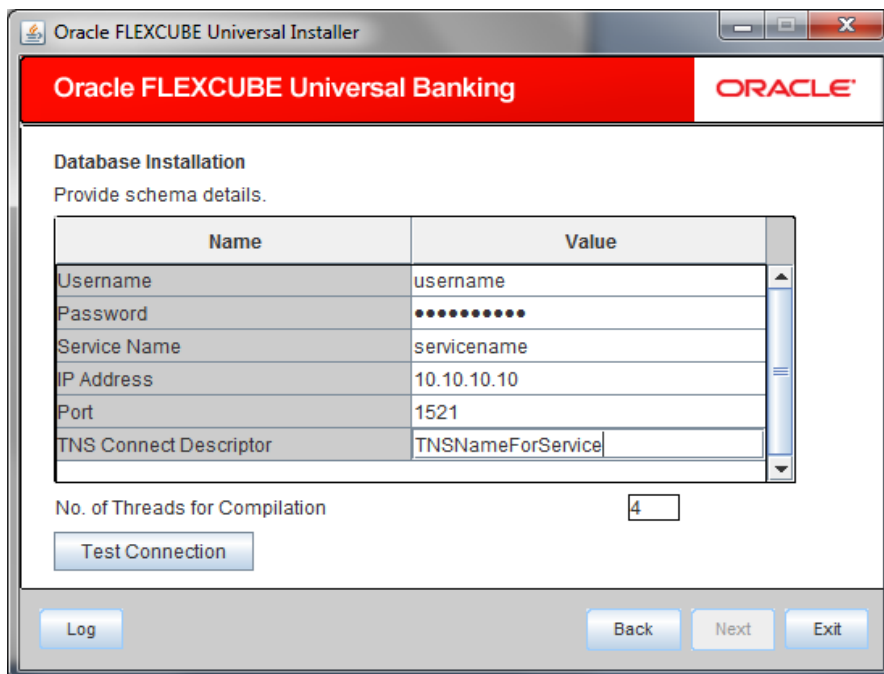
Specify the destination directory. Use the directory icon to browse the Destination directory.

4. Click 'Next' to start objects copy.





5. The Installer will copy the source files from the source directory to the destination directory. The files are taken from this location for compilation.
6. Once the copy process is completed, the Installer navigates you to the following screen.



7. Specify the following schema details:

**User Name**

Specify the user name to access the schema.

**Password**

Enter the schema password.

**Service Name**

Provide service name of Database.

**TNS Connect Descriptor**

Specify a valid connect string that contains the details for database connectivity.

**IP Address**

Specify the IP address of the system where the database schema is installed.

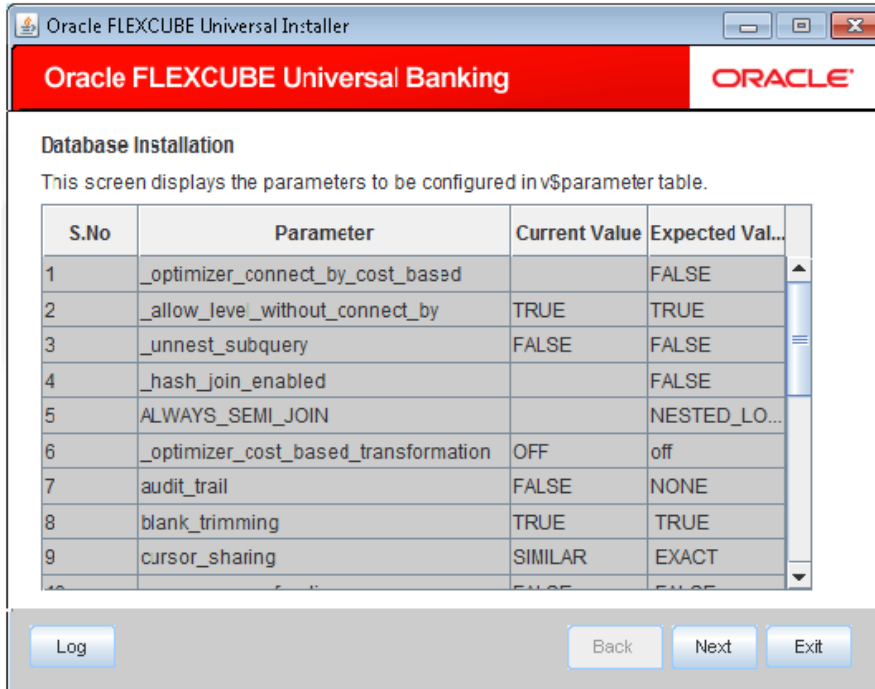
**Port**

Specify the port number.

**No. of threads for Compilation**

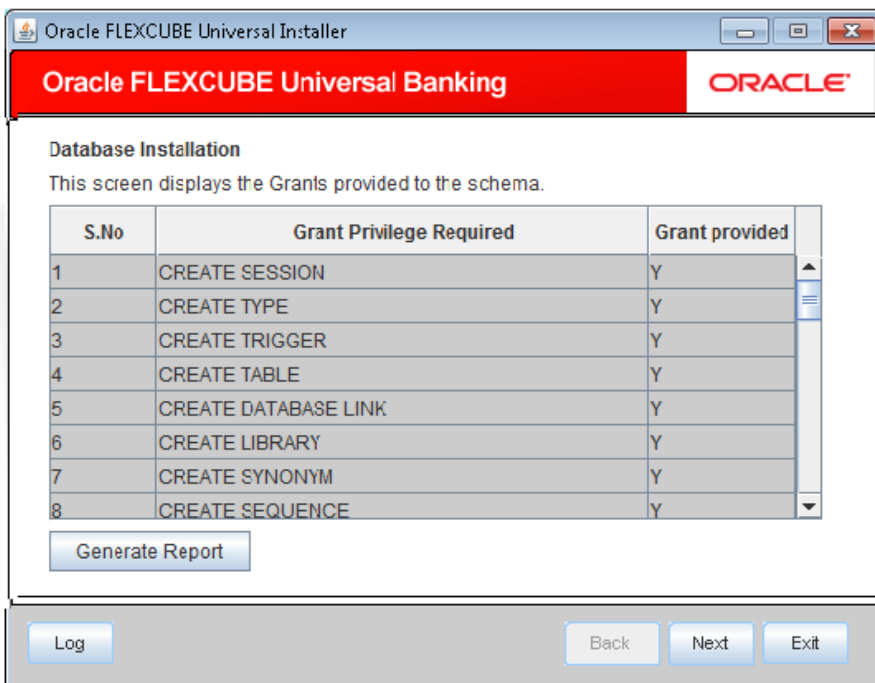
Specify the number of processes that would be used to compile INC files. Recommended value is 4 to 8. (no of cores of the machine from where db is being set).Maximum Limit is No of cores\*2.

8. Once you have entered the details, you can test the database schema connection using 'Test Connection' button.
9. After testing the connection, click 'Next'. The following screen is displayed.



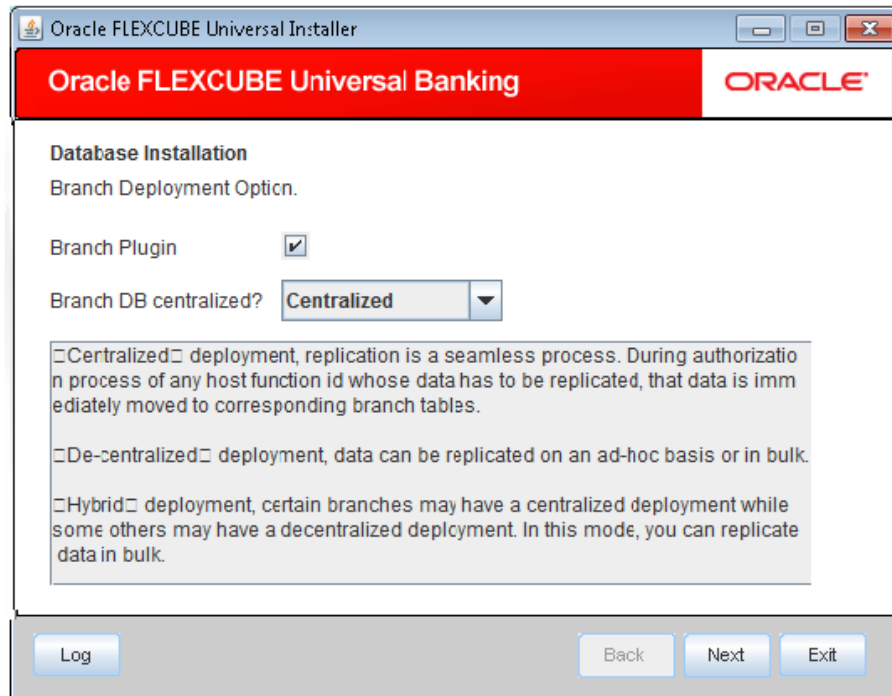
10. This screen displays the parameter details of the database. This is for information purpose.

11. Click 'Next'. The following screen is displayed.



12. This screen displays the grants provided to the schema. If object compilation is required and the privilege is not given, then you can find that out from this screen. This is for information purpose.

13. Click 'Next'. The following screen is displayed.



14. Specify the following details:

#### **Branch Plug-in**

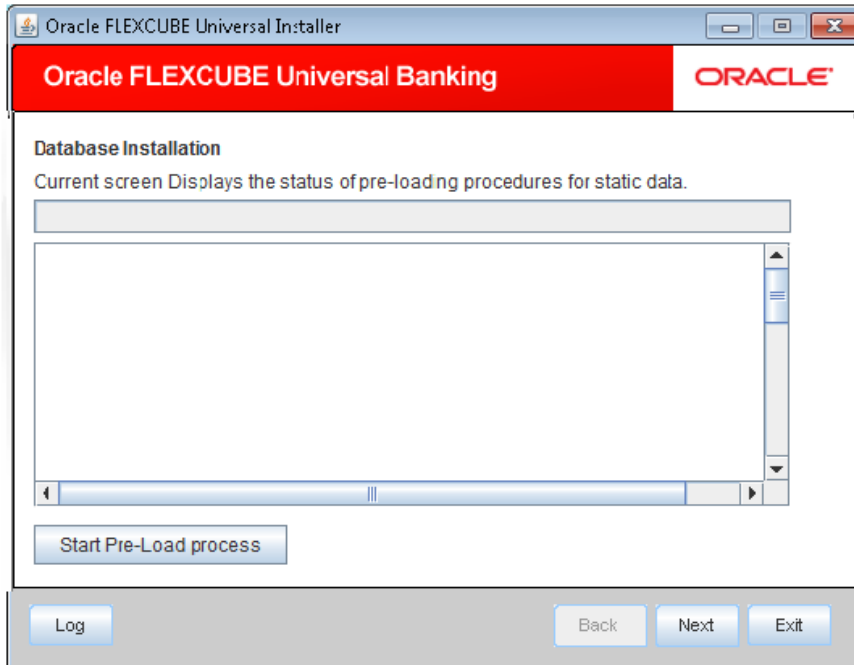
Check this box to include branch plug-in. If you check this box, you need to specify the deployment mode in the field 'Branch DB Centralized'. If you do not need branch plug-in, leave this field unchecked.

#### **Branch DB Centralized?**

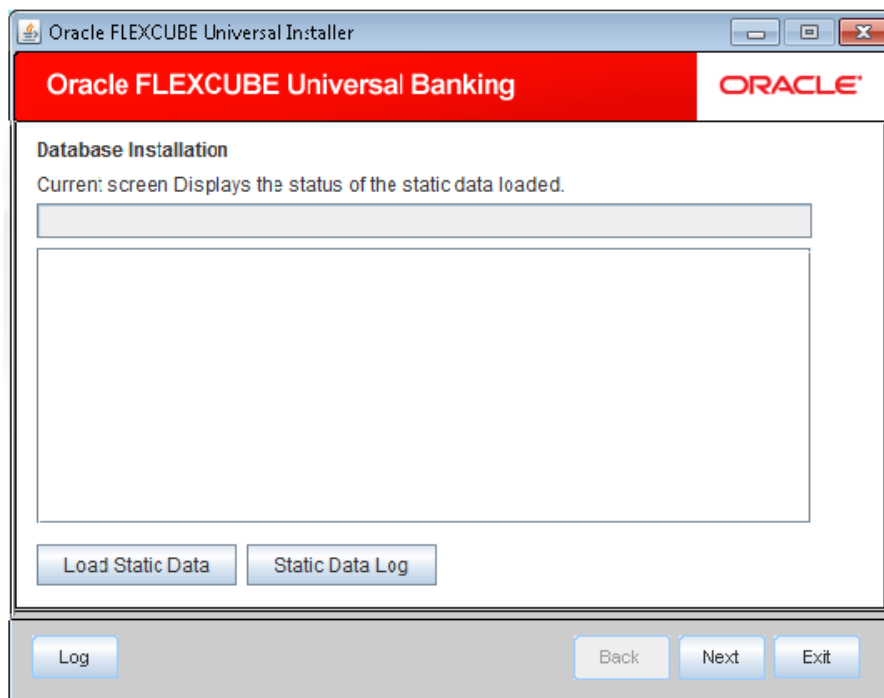
Specify the deployment mode. You can choose one of the following modes:

- Centralized
- Decentralized
- Hybrid

Once you have specified the above details, click 'Next'.



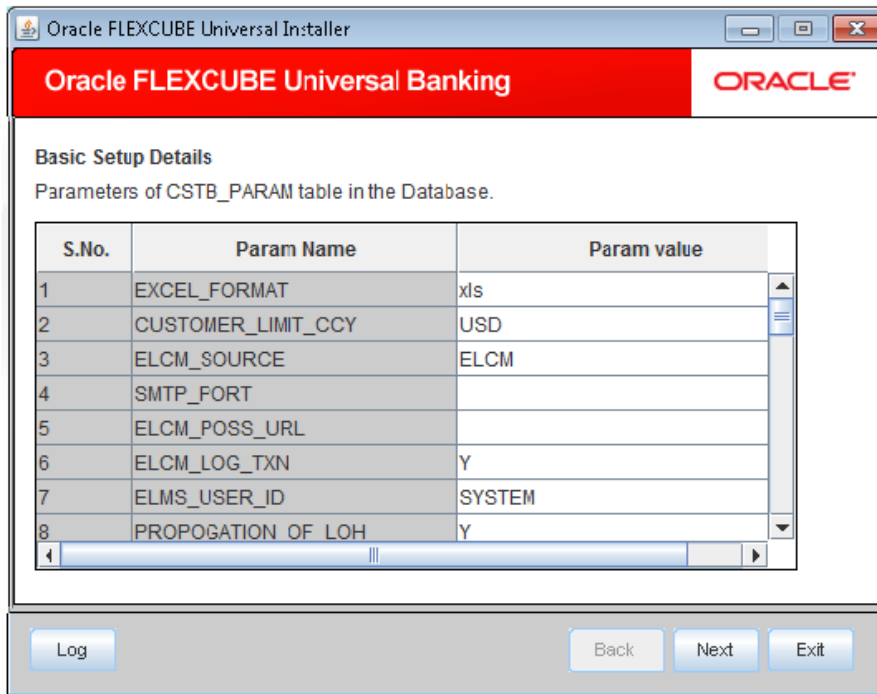
15. Click 'Start Pre-Load Process' button. The installer executes the procedures required before beginning static data compilation. All the triggers will be disabled during this process.
16. One the process is completed, you will see the following screen.



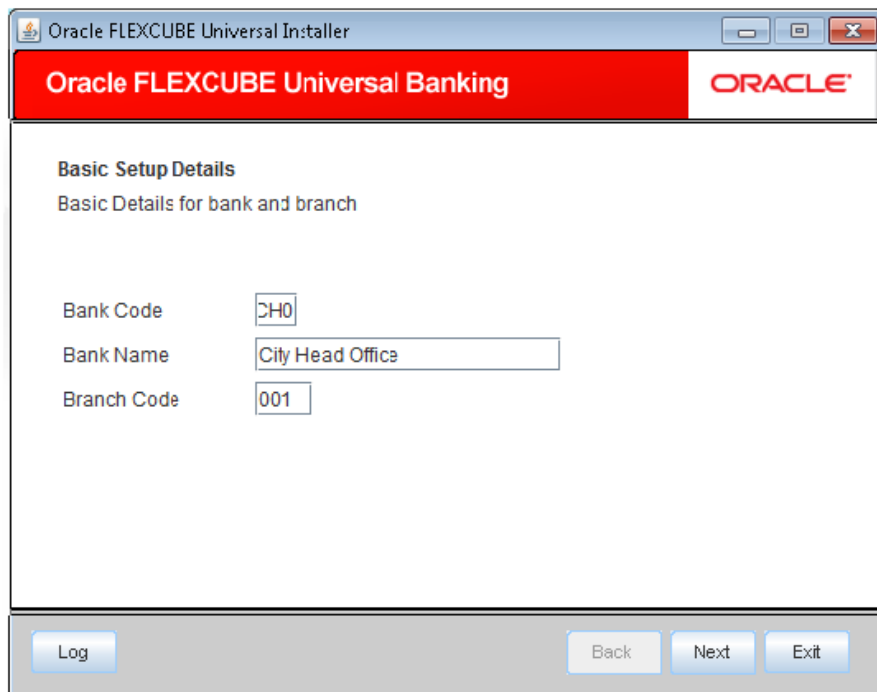
17. You can view the static data log by clicking 'Static Data Log' button.

If the consolidated/Delta check box is selected for any of the sources provided,

18. If the consolidated/Delta checkbox is selected for any of the sources provided, on Click of 'Next'. The following screen is displayed.



19. Here, you can do the basic maintenances for the table 'CSTB\_PARAM'.  
20. Click 'Next'. The following screen is displayed.



21. Here you can do the basic maintenances for the tables 'STTM\_BANK' and 'STTM\_BRANCH'.
22. Click 'Next'. The following screen is displayed.

Oracle FLEXCUBE Universal Installer

Oracle FLEXCUBE Universal Banking ORACLE

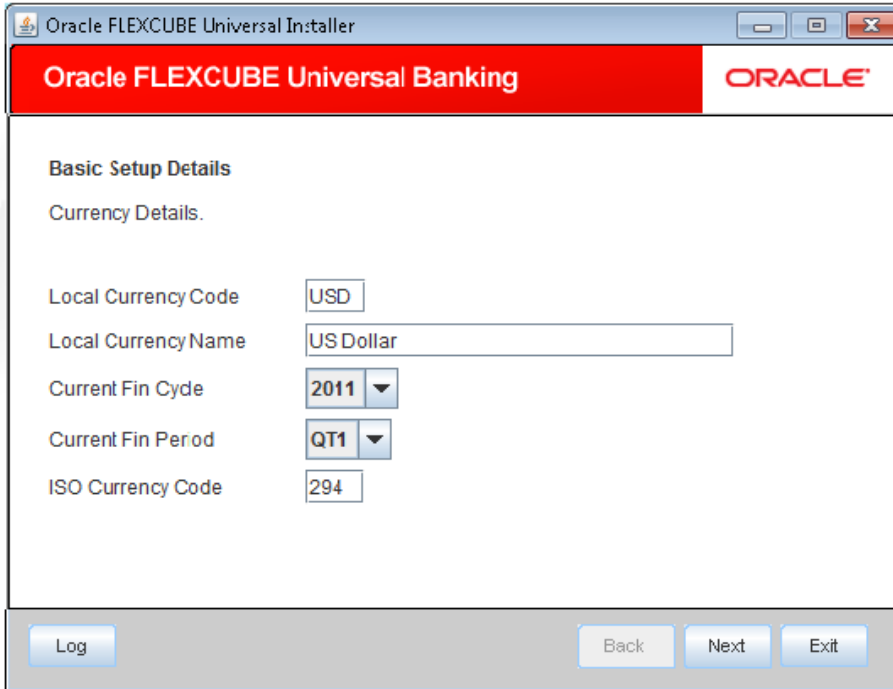
**Basic Setup Details**

Basic details about dates. The Date Format must be yyyy/mm/dd.

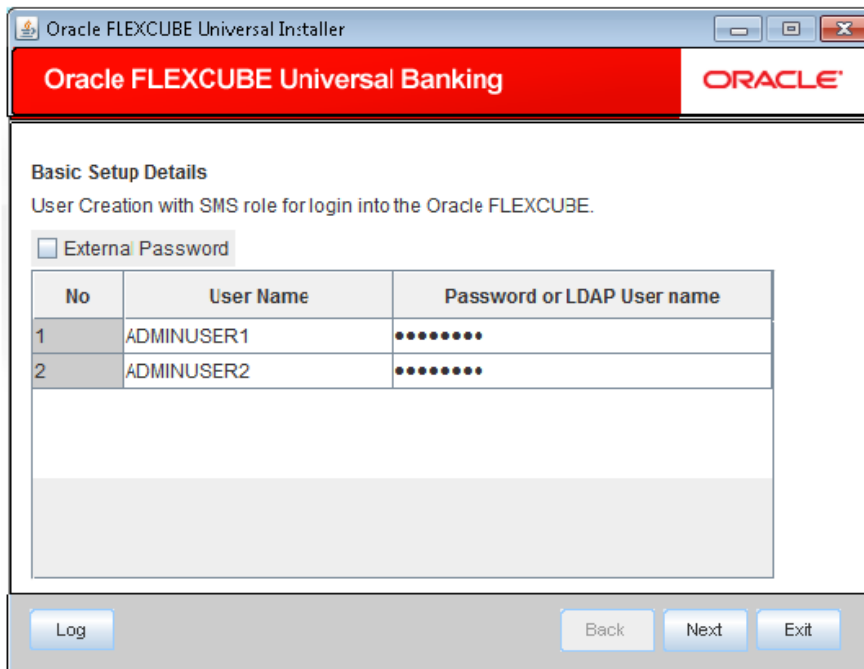
Input Date	<input type="text" value="2013/08:14"/>
Current Business Date	<input type="text" value="2013/08:14"/>
Previous Business Date	<input type="text" value="2013/08:13"/>
Next Business Date	<input type="text" value="2013/08:15"/>

Log Back Next Exit

23. Here, you can do the basic maintenances for the table 'STTM\_DATES'.
24. Click 'Next'. The following screen is displayed.

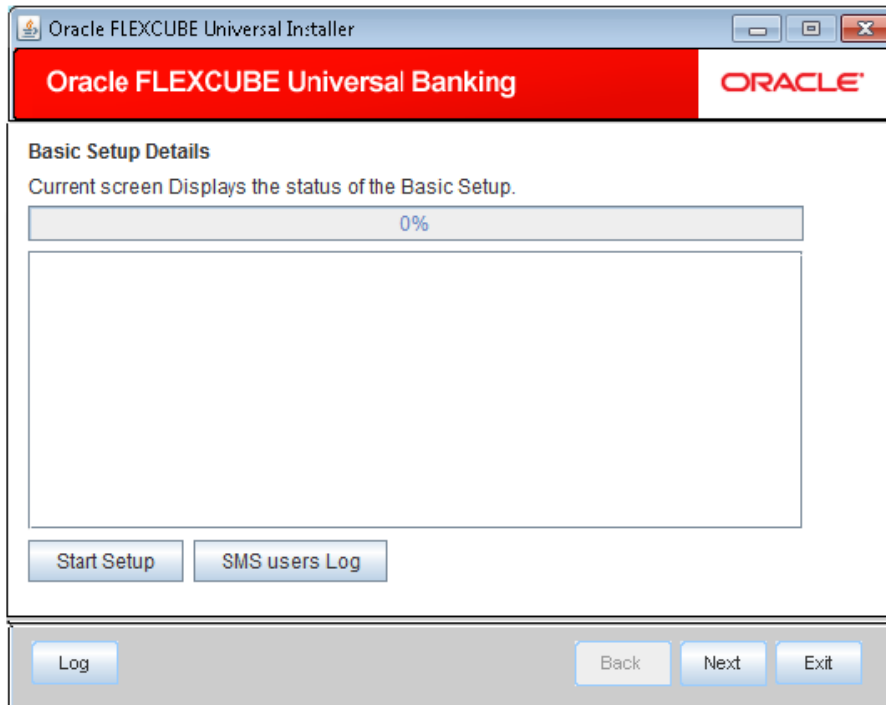


- 25. Here, you can do the basic maintenances for the table 'CYTM\_CCY\_DEFN'.
- 26. Click 'Next'. The following screen is displayed.



- 27. Here you can do the basic maintenances for the table 'SMTB\_USER' and 'SMTB\_USER\_ROLE'.
- 28. Click 'Next'. The following screen is displayed.





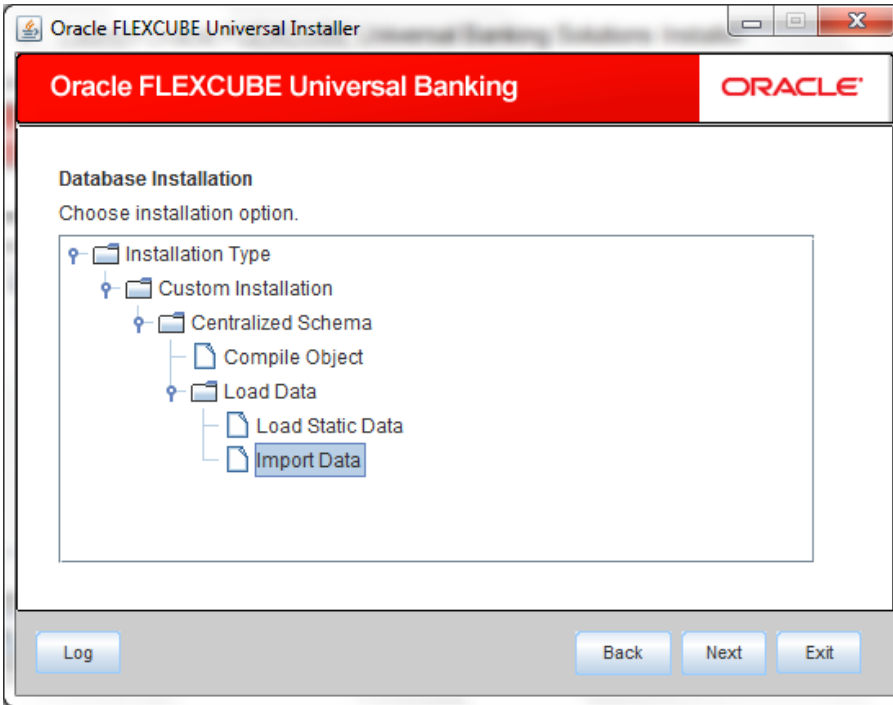
29. Click 'Start Setup' button to compile the entries.

30. This completes the static maintenance and basic setup process.

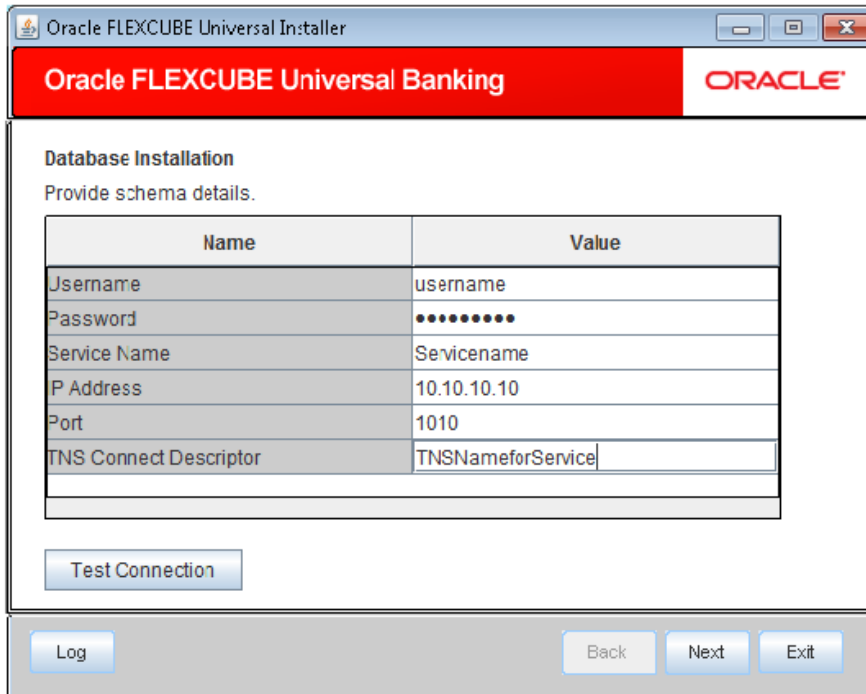
### 1.5.1 Import Database Installation

Data import is an alternative method of loading static data into the database. This section describes the process of Import DB installation.

1. Launch Oracle FLEXCUBE Universal Banking Solutions Installer.



2. Select 'Import Data' and click 'Next'. The following screen is displayed.



3. Specify the following schema details:

**User Name**

Specify the user name to access the database schema.

## Password

Enter the database schema password.

## Service Name

Specify service name of database.

## TNS Connect Descriptor

Specify a valid connect string that contains the details for database connectivity.

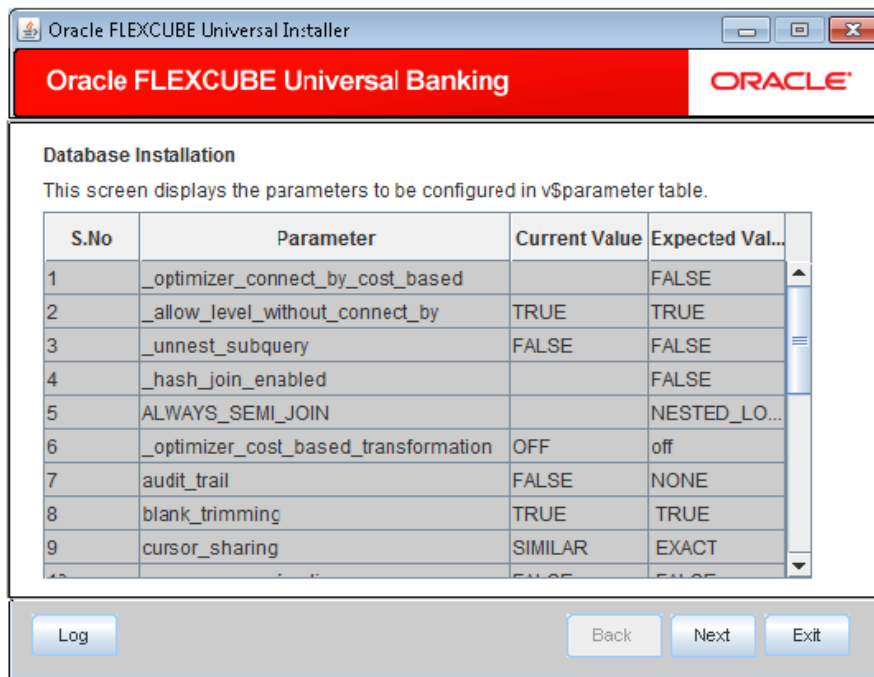
## IP Address

Specify the IP address of the system where the database schema is installed.

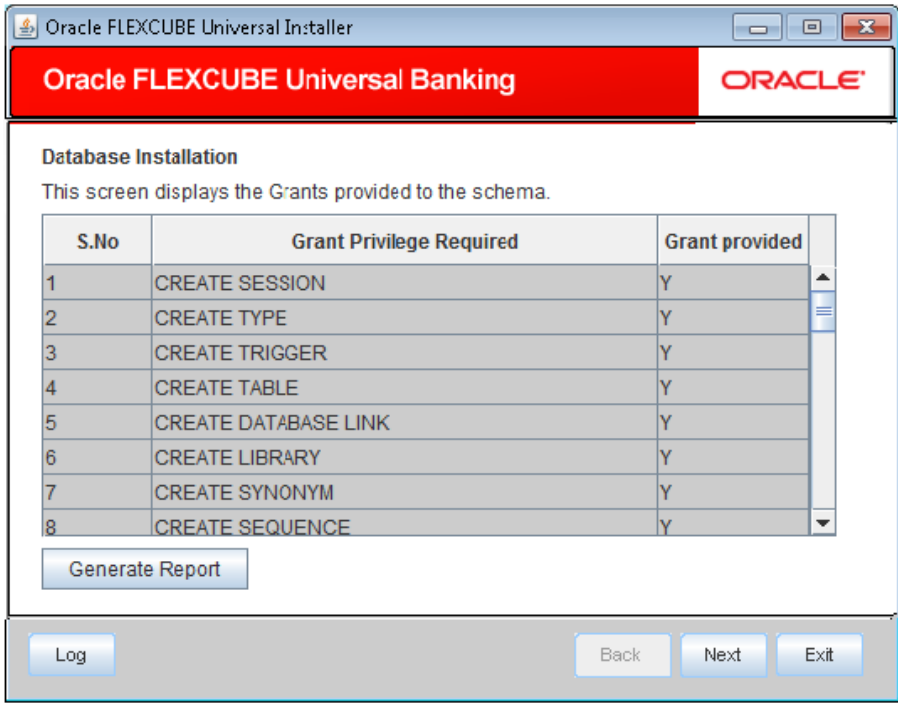
## Port

Specify the port number.

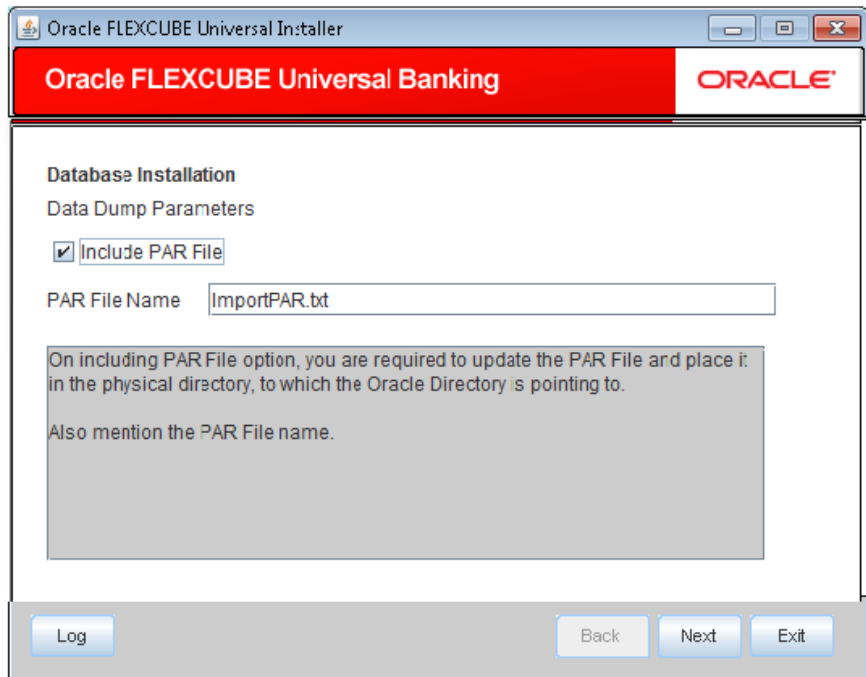
- Once you have entered the details, you can test the database schema connection using 'Test Connection' button.
- After testing the connection, click 'Next'. The following screen is displayed.



- This screen displays the parameter details of the database. This is for information purpose.
- Click 'Next'. The following screen is displayed.



8. This screen displays the grants provided to the schema. If object compilation is required and the privilege is not given, then you can find that out from this screen. This is for information purpose.
9. Click 'Next'. The following screen is displayed.



10. Specify the following details:

## Include PAR File

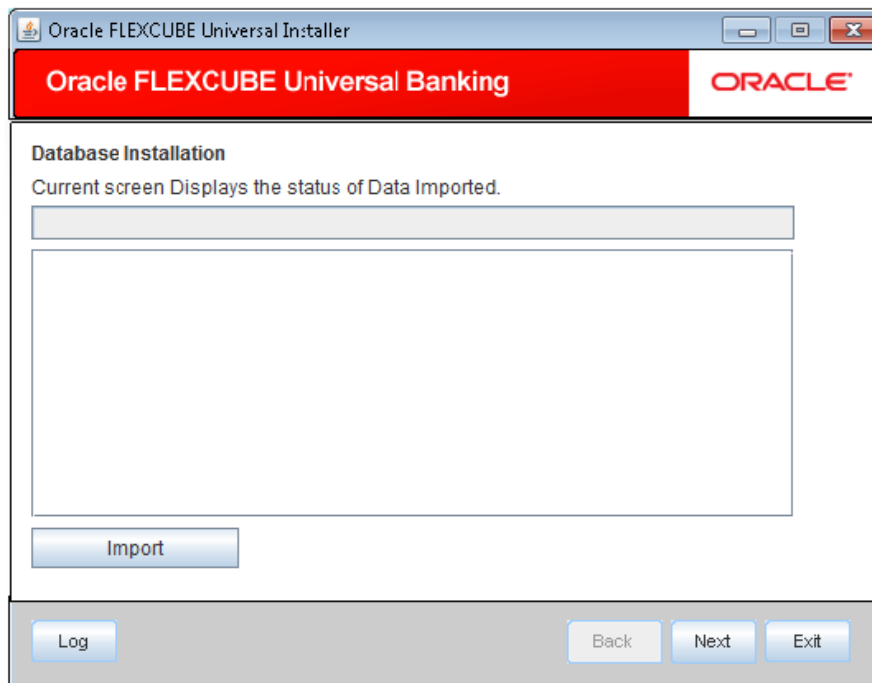
Check this box to include the PAR file. If you check this box, you need to specify the PAR file name.

PAR file stands for Parameter File. A PAR file is a text file that contains all valid parameters and their respective values. Maintaining the parameters in text format enables you to modify or reuse them easily.

## PAR File Name

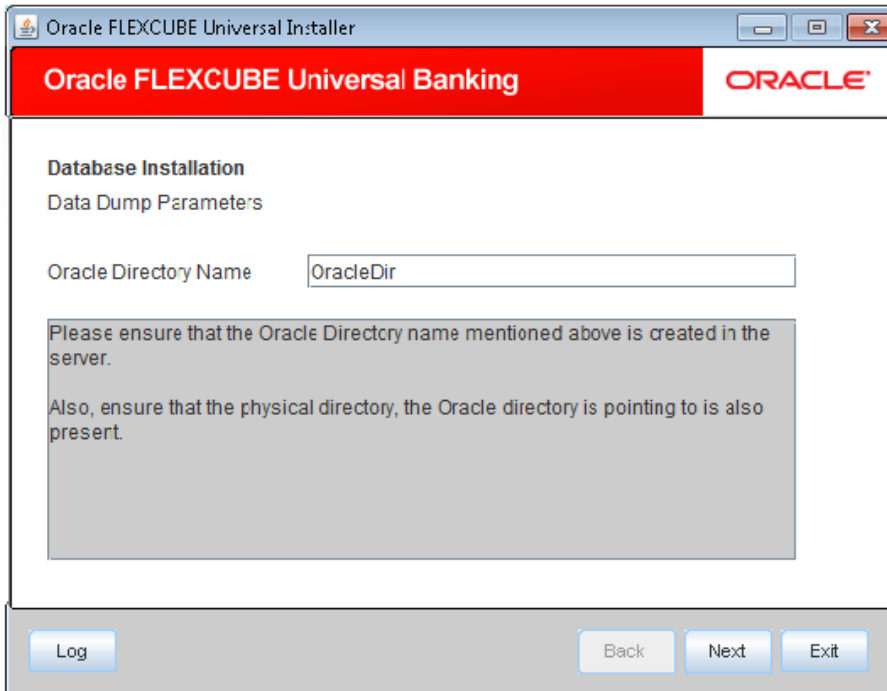
If you have checked the box 'Include PAR File', you need to specify the PAR file name here.

11. Once you have specified the above details, click 'Next' button.



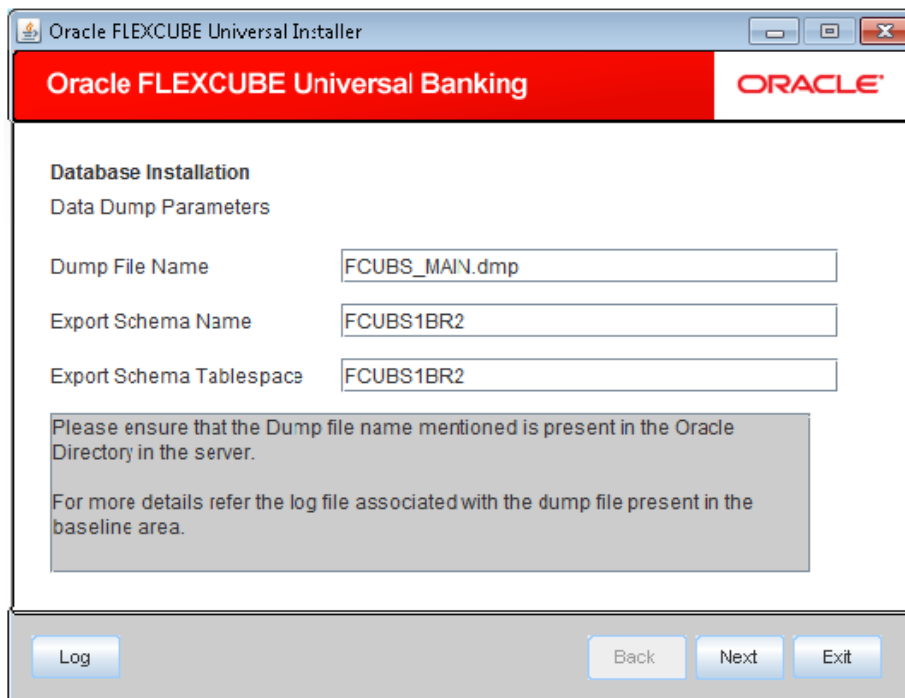
12. Click 'Import' button to import the database with the PAR file parameters.

If you have not checked the box 'Include PAR File',



13. Specify the Oracle directory name. This is the directory in the server machine where the import file is located.

14. Click 'Next'. The following screen is displayed.



15. Specify the following details:

**Dump File Name**

Specify the import file name.

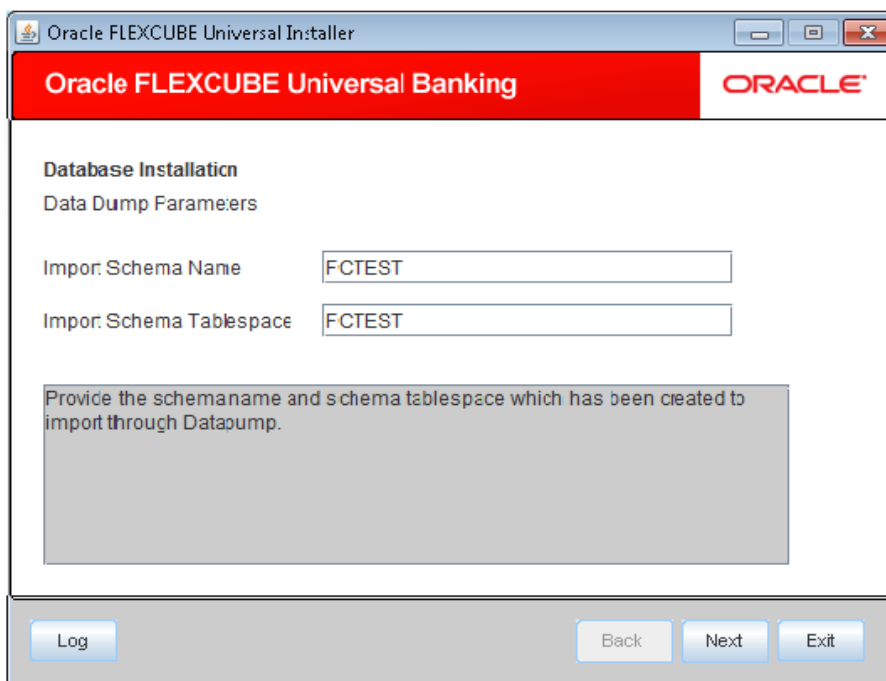
**Export Schema Name**

Specify the export schema name from which the import file is imported.

**Export Schema Tablespace**

Specify the export schema tablespace from which the import file is imported.

16. Once you have specified the above details, click 'Next'. The following screen is displayed.



17. Specify the following details:

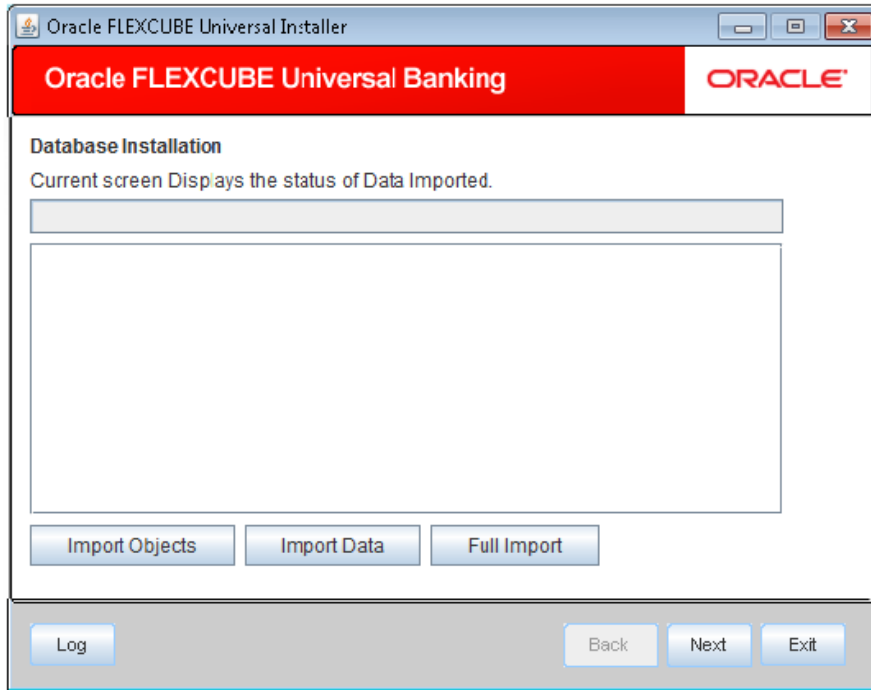
**Import Schema Name**

Specify the import schema name to which the import file is loaded.

**Import Schema Table space**

Specify the import schema table space to which the import file is loaded.

18. Once you have specified the above details, click 'Next' button. The following screen is displayed.



19. This triggers the import operation. You can optionally import the objects, data or full set by using 'Import Objects', 'Import Data' or 'Full Import' buttons respectively.





**FLEXCUBE General Ledger Database Setup**  
**[May] [2016]**  
**Version 12.2.0.0.0**

**Oracle Financial Services Software Limited**  
**Oracle Park**  
**Off Western Express Highway**  
**Goregaon (East)**  
**Mumbai, Maharashtra 400 063**  
**India**

**Worldwide Inquiries:**  
**Phone: +91 22 6718 3000**  
**Fax: +91 22 6718 3001**  
[www.oracle.com/financialservices/](http://www.oracle.com/financialservices/)

**Copyright © 2007, 2016, Oracle and/or its affiliates. All rights reserved.**

**Oracle and Java are registered trademarks of Oracle and/or its affiliates. Other names may be trademarks of their respective owners.**

**U.S. GOVERNMENT END USERS:** Oracle programs, including any operating system, integrated software, any programs installed on the hardware, and/or documentation, delivered to U.S. Government end users are "commercial computer software" pursuant to the applicable Federal Acquisition Regulation and agency-specific supplemental regulations. As such, use, duplication, disclosure, modification, and adaptation of the programs, including any operating system, integrated software, any programs installed on the hardware, and/or documentation, shall be subject to license terms and license restrictions applicable to the programs. No other rights are granted to the U.S. Government.

**This software or hardware is developed for general use in a variety of information management applications. It is not developed or intended for use in any inherently dangerous applications, including applications that may create a risk of personal injury. If you use this software or hardware in dangerous applications, then you shall be responsible to take all appropriate failsafe, backup, redundancy, and other measures to ensure its safe use. Oracle Corporation and its affiliates disclaim any liability for any damages caused by use of this software or hardware in dangerous applications.**

**This software and related documentation are provided under a license agreement containing restrictions on use and disclosure and are protected by intellectual property laws. Except as expressly permitted in your license agreement or allowed by law, you may not use, copy, reproduce, translate, broadcast, modify, license, transmit, distribute, exhibit, perform, publish or display any part, in any form, or by any means. Reverse engineering, disassembly, or decompilation of this software, unless required by law for interoperability, is prohibited.**

**The information contained herein is subject to change without notice and is not warranted to be error-free. If you find any errors, please report them to us in writing.**

**This software or hardware and documentation may provide access to or information on content, products and services from third parties. Oracle Corporation and its affiliates are not responsible for and expressly disclaim all warranties of any kind with respect to third-party content, products, and services. Oracle Corporation and its affiliates will not be responsible for any loss, costs, or damages incurred due to your access to or use of third-party content, products, or services.**